

PX Series

PX750U digital projector

Powerful installation projector equipped to take on the most demanding integration projects.

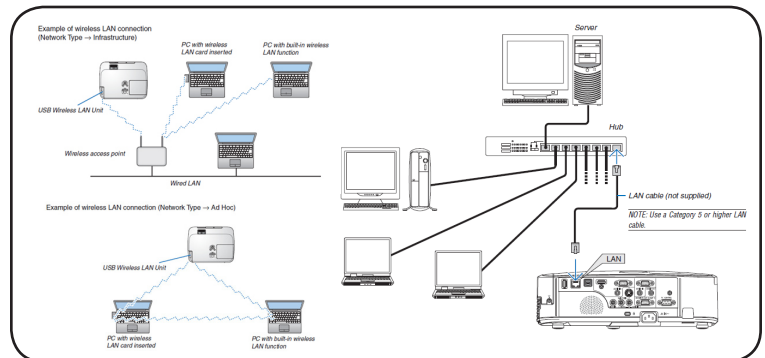
FLEXIBILITY ENABLES PERFORMANCE

- Integrated Device Technology HQV™ is a high-performance video processing/scaling system designed for computer signals as well as standard or high-definition video. The technology produces superior video processing using pixel-based, motion-adaptive de-interlacing to remove undesirable motion artifacts typical of interlaced signals. This processing creates life-like images in applications such as video conferencing.
- Bright enough for most applications: 7500 lumens with a 6-segment (RGBYCW) color wheel. For higher video quality color reproduction, BrilliantColor™ technology and a second 6-segment (RGBYCM) color wheel (included) can dramatically increase color saturation at mid and low video levels, while optimizing color gain across the full color gamut.
- Geometric correction tool allows you to project on spheres, cylinders and more
- VIDi technology, a Phillips innovation designed to work in conjunction with the color wheel, uses a brilliant pulse to increase the brightness of the image and a dark pulse to increase the contrast ratio



INTEGRATED NETWORKING AND ASSET MANAGEMENT

- Integrated RJ45 connection for quick connection to the LAN (10/100 base-T capability)
- Integrated high-speed wireless LAN IEEE 802.11b/g
- Desktop control allows you to securely transmit information wirelessly to the projector from a docking station or PC in another room
- Image Express Utility (IEU 2.0; compatible with Windows or Mac operating systems) dedicated projector software provides wired and wireless data transmission via peer-to-peer or over the network
 - Broadcast mode allows you to send information from one computer to several projectors
- Windows Network Projector function within Windows Vista connects directly to networked projectors without the need for additional proprietary software
- Windows Remote Desktop function allows you to control a networked computer by connecting a USB mouse and keyboard directly to the projector's USB input
- Windows Network Drive Function displays multimedia files (.jpeg, .bmp, .png, .mpeg2 or .wmv9) in the Windows shared folder on a local network using the Viewer function—all without bringing your PC into the conference room
- Windows Media Connection Function displays multimedia files (.mpeg2, .jpeg or .wmv9) stored on the Windows Media Connect server or a local network using the Viewer function—all without bringing your PC into the conference room
- Crestron Roomview Connected™

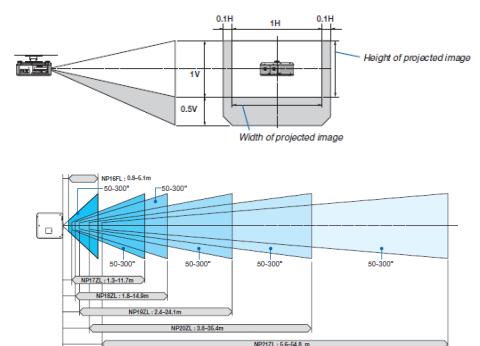


SECURITY FEATURES PROVIDE PEACE OF MIND

- Cabinet control lock setting enables user to deactivate buttons on cabinet to prevent unwanted changes to projector settings
- Logo lock restricts changes to logo saved in projector memory
- Password protection restricts unauthorized use of projector
- Email notification informs the system administrator when the lamp approaches the end of its useful life

Lens Shift

Enjoy greater installation flexibility with up to 50% vertical lens shift and +/- 10% horizontal lens shift. Lens throw distances range from 2.6 to 179.8 feet.



DESIGNED WITH THE ENVIRONMENT IN MIND

- **Extended lamp life with ECO Mode™ technology** increases lamp life up to 2500 hours, while lowering power consumption
- **Power management** enables projector to automatically turn off when an incoming signal is not detected from any of the inputs
- **Auto Power On** via the RGB (15-pin) input connector when a signal is detected from a computer
- **Carbon savings meter** calculates the positive effects of operating the projector in ECO Mode, which is encouraged by an optional message at startup. A green ECO Mode button on the remote control makes the switch easy.
- **Quick start (3 to 4 seconds)** lets you begin presenting in seconds while quick shutdown (immediate power off with no cooling required after shutdown) ensures efficient energy usage
- **Sleep timer** can be set to automatically turn off the projector at set countdown times
- **Low power consumption** (0.2W in stand-by mode) minimizes energy costs
- **Direct power off** provides instantaneous shutdown of the projector



2500-hour filter life

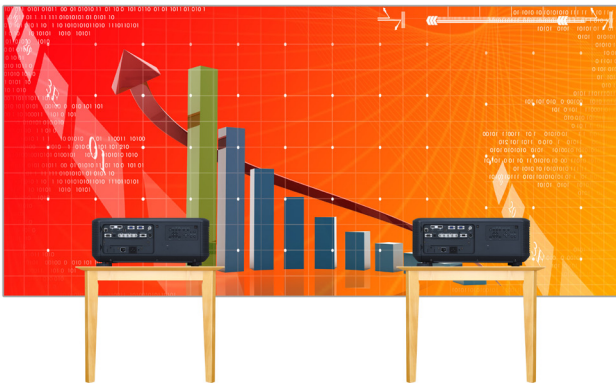
NEC is committed to designing its products to provide long lifecycles. This commitment even extends to components within its products, including the improved filter. This virtually maintenance-free filter reduces the frequency at which cleaning is required, thereby decreasing your total cost of ownership. Filter replacement is only required at the time the lamp is replaced.



BUILT-IN SOFTWARE

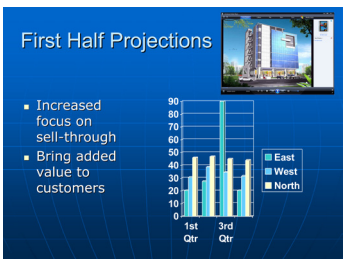
Edge blending

This function seamlessly blends multiple projected images to display a single high-resolution image.



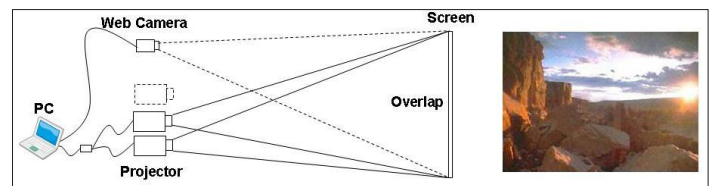
PIP/Side-by-Side

This function allows two sources to be displayed on the screen at one time in either a picture-in-picture or side-by-side configuration.



Built-in stacking correction

The industry's first built-in stacking correction capabilities (up to four projectors) allows the projectors to boost an image's brightness up to 30,000 lumens, which is ideal for larger-sized screens and environments with heavy ambient light. This feature also prevents the complete loss of an image, which can happen when using only one projector.



DICOM SIM

DICOM Simulation enables users in medical environments to display accurate diagnostic images.



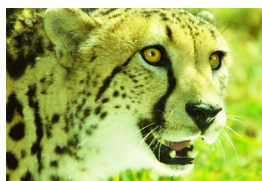
Built-in wall color correction presets

These provide for adaptive color tone correction to display properly on non-white surfaces.

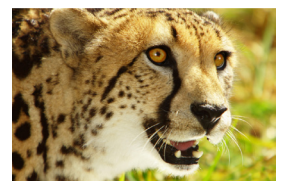


On a green wall...

BEFORE
auto wall correction



AFTER
auto wall correction



GET CONNECTED WITH A WIDE SELECTION OF INPUTS

- **Dual computer inputs** ensure quick switching between presentations
- **Four audio inputs (two mini stereo [Comp1 & Comp2], R/L [RCA - shared by video sources] and HDMI®)** make it easy to add sound to enhance your presentations

Remote control

Easy control from remote allows you to adjust lamp mode, aspect ratio, volume and image all with the touch of a button.



HDMI input

Among the PX Series' wide selection of inputs is an HDMI w/HDCP for connecting to high-definition sources such as Blu-ray players, cable boxes, satellite receivers and personal computers.



DisplayPort

This input provides PX Series models with expanded connectivity with advanced technology.



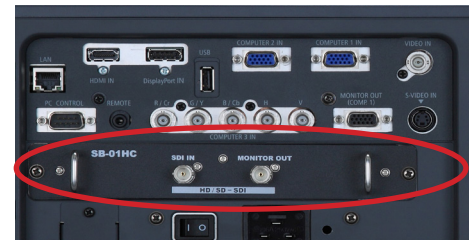
USB Viewer

In instances when you'd prefer to leave your laptop behind for a presentation, PX Series projectors can deliver a solution. Using the presentation conversion software included with your projector, simply place your file onto a USB drive and plug it into the projector's USB port. This allows you to display images stored as .jpgs from optional USB memory.



Open Pluggable Specification (OPS)

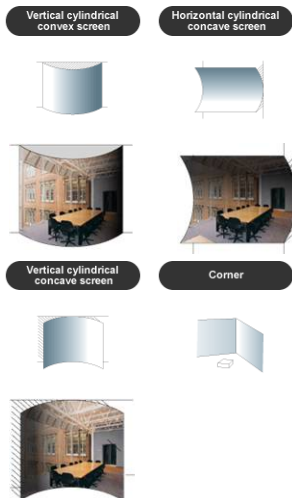
The first industry-wide standardization in option slots simplifies installation, use and maintenance, while offering superior input flexibility.



ADVANCED SOFTWARE FEATURES

Geometric Correction

Projecting an image isn't confined to a standard flat screen or wall with the NEC PX Series. Geometric correction allows these models to project an image on spheres, cylinders, corner angles and many more non-standard surfaces.



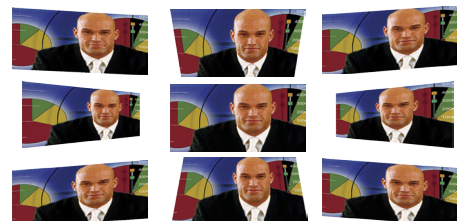
Virtual Remote™ (DDC/CI)

Used over the VGA cable, you can control the projector directly from a computer without the need for additional control cables.



Cornerstone

Enhanced keystone correction allows for horizontal, vertical and diagonal image correction for aligned images even when the projector is set up at an angle to the screen.





UNIQUE FEATURES

3D Reform™ allows you to square the image by adjusting horizontally, vertically or diagonally when the projector cannot be placed parallel or perpendicular to the screen

Advanced AccuBlend™ ensures detailed images when non-native resolution sources are connected to the projector

AutoSense™ automatically syncs with any computer signal and features one-touch image optimization

64-step image magnification with location control

Discreet source keys for source selection

Remote diagnostics enable the user to monitor and make adjustments to the projector remotely

Built-in HTTP page for control and monitoring over a LAN network. Email notification of error messages or lamp end-of-life can be sent to remote locations.

WARRANTY

Registered owners receive a 3-year parts and labor warranty including the first year of InstaCare. The lamp is covered for one year or 500 hours, whichever comes first. InstaCare provides the original owner one year of either limited 3 business day repair/return or next business day exchange.

IN THE BOX

Remote control, remote control cable, batteries, power cord, RGB signal cable, lens cap, user's manual on CD-ROM, quick start guide, product registration card, wired and wireless network setup guide, lens anti-theft screw

Ordering Model Numbers

NP-PX750U

Specifications for PX750U

OPTICAL	<ul style="list-style-type: none"> Display Technology Resolution Native Maximum Light Output (lumens) Contrast Ratio (up to) Lamp Type Lamp Life (up to) Screen Size (diagonal) Throw Ratio NP16FL NP17ZL NP18ZL NP19ZL NP20ZL NP21ZL Lens* Zoom Focus F-number NP16FL NP17ZL NP18ZL NP19ZL NP20ZL NP21ZL Shift Shutter Keystone Correction 	<ul style="list-style-type: none"> 0.67" DMD WUXGA 1920 x 1200 WUXGA 1920 x 1200 7500 normal / Eco = approx. 85% of normal mode 2100:1 (2) 400W AC 2000 hours normal / 2500 hours eco 50 to 300 in. / 1270 to 7620mm 0.76:1 1.25 - 1.79:1 1.73 - 2.27:1 2.22 - 3.67:1 3.6 - 5.4:1 5.3 - 8.3:1 Power Power F = 1.85, f = 11.6mm F = 1.85 to 2.5, f = 18.7 to 26.5mm F = 1.73 to 2.27, f = 25.7 to 33.7mm F = 1.86 to 2.48, f = 32.9 to 54.2mm F = 1.85 to 2.41, f = 52.8 to 79.1mm F = 1.85 to 2.48, f = 78.5 to 121.9mm Motorized 50% Vertical and 10% Horizontal Yes (motorized) V +/-35° H +/-30°
SIGNAL COMPATIBILITY/CONNECTIVITY	<ul style="list-style-type: none"> Scan Rate Supported Video Standards SD/HD Video Signal Compatibility PC Signal Compatibility Macintosh Compatibility Input/Output Terminals RGB1 (analog) RGB2 (analog) RGB3 (analog) RGB4 (digital) RGB5 (digital) Video 1 Video 2 Video 3 Option Slot Monitor Out External Control Sync Compatibility Networking Screen Trigger USB 	<ul style="list-style-type: none"> Horizontal 15 - 108 kHz / Vertical 48 - 120 Hz NTSC, NTSC4.43, PAL, PAL-60, PAL-M, PAL-N, SECAM 1080p, 1080i, 720p, 575p, 575i, 480p, 480i VGA, SVGA, XGA, SXGA, SXGA+, UXGA, WXGA Yes 15 pin 15 pin S-BNC HDMI w/HDCP DisplayPort RCA S-Video Component HD/SD-SDI 1-15 pin 9-pin D-sub, RS-232, IR Separate Sync / Composite Sync / Sync on G RJ-45 and Wireless LAN (optional) Yes Viewer
ELECTRICAL	<ul style="list-style-type: none"> Power Requirements Input Current Normal Mode ECO Mode Power Consumption Normal Mode ECO Mode Standby Power / Power Saving 	<ul style="list-style-type: none"> 100 - 240V AC, 50/60Hz 10.8A dual lamp / 3.8A single lamp 5.8A dual lamp / 3.1A single lamp 1006W dual lamp / 530W single lamp 810W dual lamp / 439W single lamp 33W / 23W / 0.2W
MECHANICAL	<ul style="list-style-type: none"> Installation Orientation Dimensions (WxDxH) Net Weight Fan Noise Regulations 	<ul style="list-style-type: none"> Floor/Front, Floor/Rear, Ceiling/Front, Ceiling/Rear 19.8 x 20.3 x 7.6 in. / 504 x 516 x 192mm 43.4 lbs. / 19.7 kg 43 dB normal / 39 dB eco @ 1m USA UL60950-1 FCC Part 15 Class B, Canada CSA60950-1 IEC60332 Class B
ENVIRONMENTAL	<ul style="list-style-type: none"> Operational Temp Humidity Storage 	<ul style="list-style-type: none"> 41° - 104°F / 5° - 40°C Sea level / 41° - 73°F / 5° - 23°C @ 10,000 ft. 20-80% non-condensing 14° - 122°F / -10° - 50°C
ACCESSORIES	<ul style="list-style-type: none"> NP16FL NP17ZL NP18ZL NP19ZL NP20ZL NP21ZL SB-01HC TBD TBD RMT-PJ33 PWRCRD-PJPX RGBCL-PJPX SCP200 NP22LP NECEW2-I NECEW1-I ADVEXON1-I ADVEXON2-I TBD TBD TBD 	<ul style="list-style-type: none"> 0.76:1 fixed short throw lens 1.25 - 1.79:1 zoom lens 1.73 - 2.27:1 zoom lens 2.22 - 3.67:1 zoom lens 3.6 - 5.4:1 zoom lens 5.30 - 8.30:1 zoom lens HD/SD-SDI input card Ceiling mount ATA-certified case for shipping and secure storage Replacement remote control Replacement power cable Replacement RGB signal cable Suspended ceiling plate Replacement lamp Extends term of parts and labor warranty to 5 years Extends term of parts and labor warranty to 4 years Extends term of InstaCare service program to 2 years Extends term of InstaCare service program to 3 years Maintenance plan Extends maintenance plan for 3rd year including parts & labor Extends maintenance plan for 4th year including parts & labor

* Lens does not ship with the projector.

Additional accessories are available, including screens, carts, mount accessories and replacement cables. Visit www.necdisplay.com for details.



3D Reform, Advanced AccuBlend, AutoSense and ECO Mode are trademarks of NEC Display Solutions. All other brand or product names are trademarks or registered trademarks of their respective holders. Product specifications subject to change. 6/11 ver. 1.

©2011 NEC Display Solutions of America, Inc. All rights reserved.

NEC Display Solutions

500 Park Boulevard, Suite 1100
Itasca, IL 60143
866-NEC-MORE

NEC